

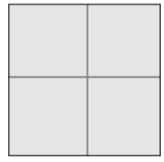
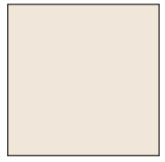
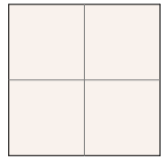
COLOMBIER 10

Rue du Colombier, 1201 Genève

APPARTEMENT 5 PIÈCES A3_01 3ème étage

SURFACE PPE APPARTEMENT : 139 m²

SURFACE LOGGIA : 6 m² + 28 m²

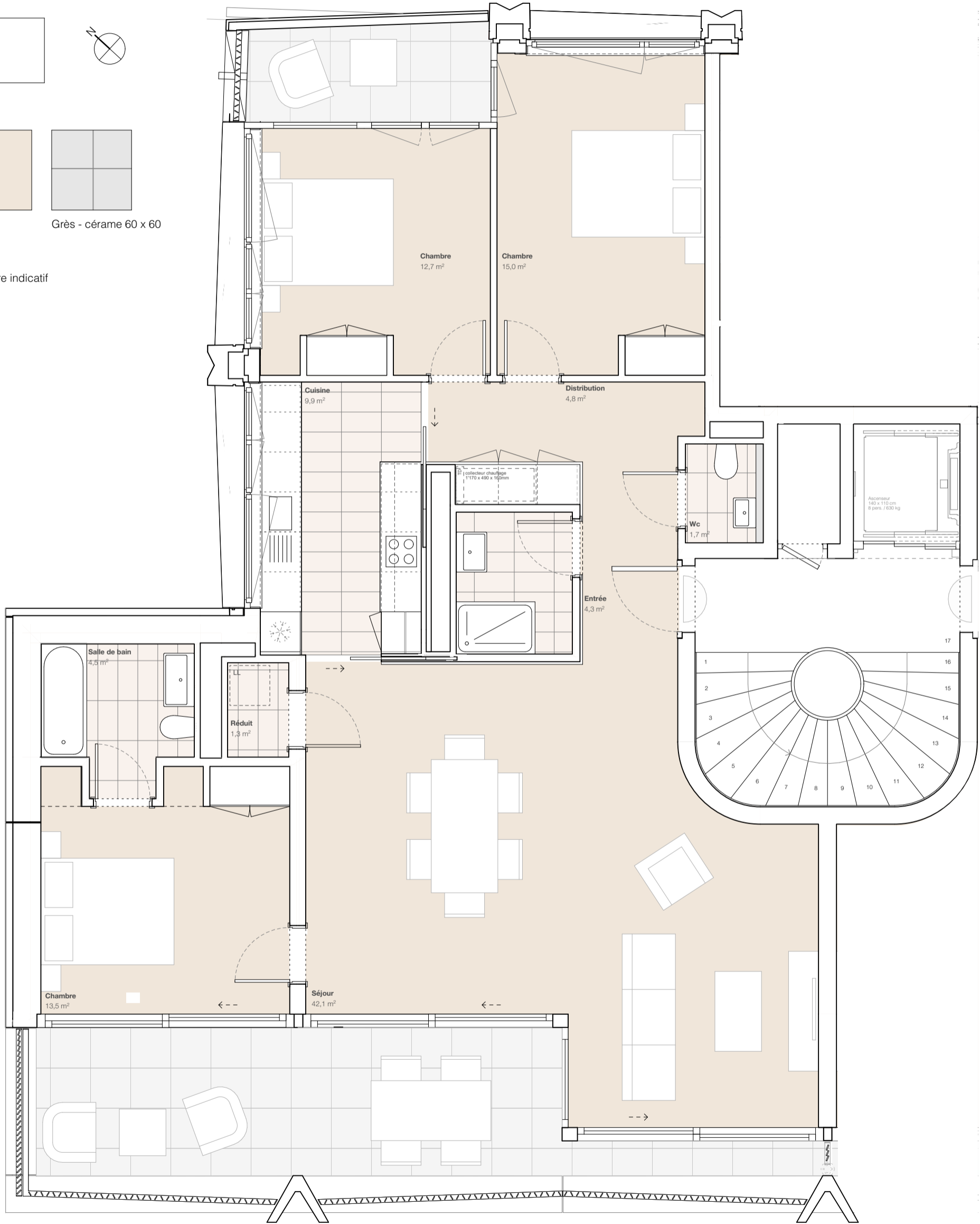
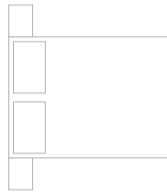


Grès - cérame

Parquet

Grès - cérame 60 x 60

Proposition ameublement à titre indicatif



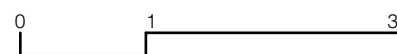
maa

Maître d'ouvrage
Corberia SA

p.a. Targa Immobilier
Rue Vautier 11, 1227 Carouge GE

COMMERCIALISATION
395maa_906-A

Architectes
meier + associés
architectes
Rue du Môle 38bis
1201 Genève



Echelle: graphique

Dessin: ar
Création: 26.06.24

Modification: