

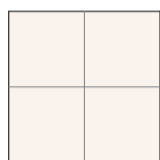
COLOMBIER 10

Rue du Colombier, 1201 Genève

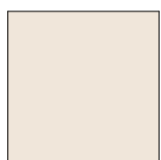
APPARTEMENT 5 PIÈCES C1_01 1er étage

SURFACE PPE APPARTEMENT : 128 m²

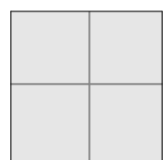
SURFACE LOGGIA : 15 m²



Grès - cérame

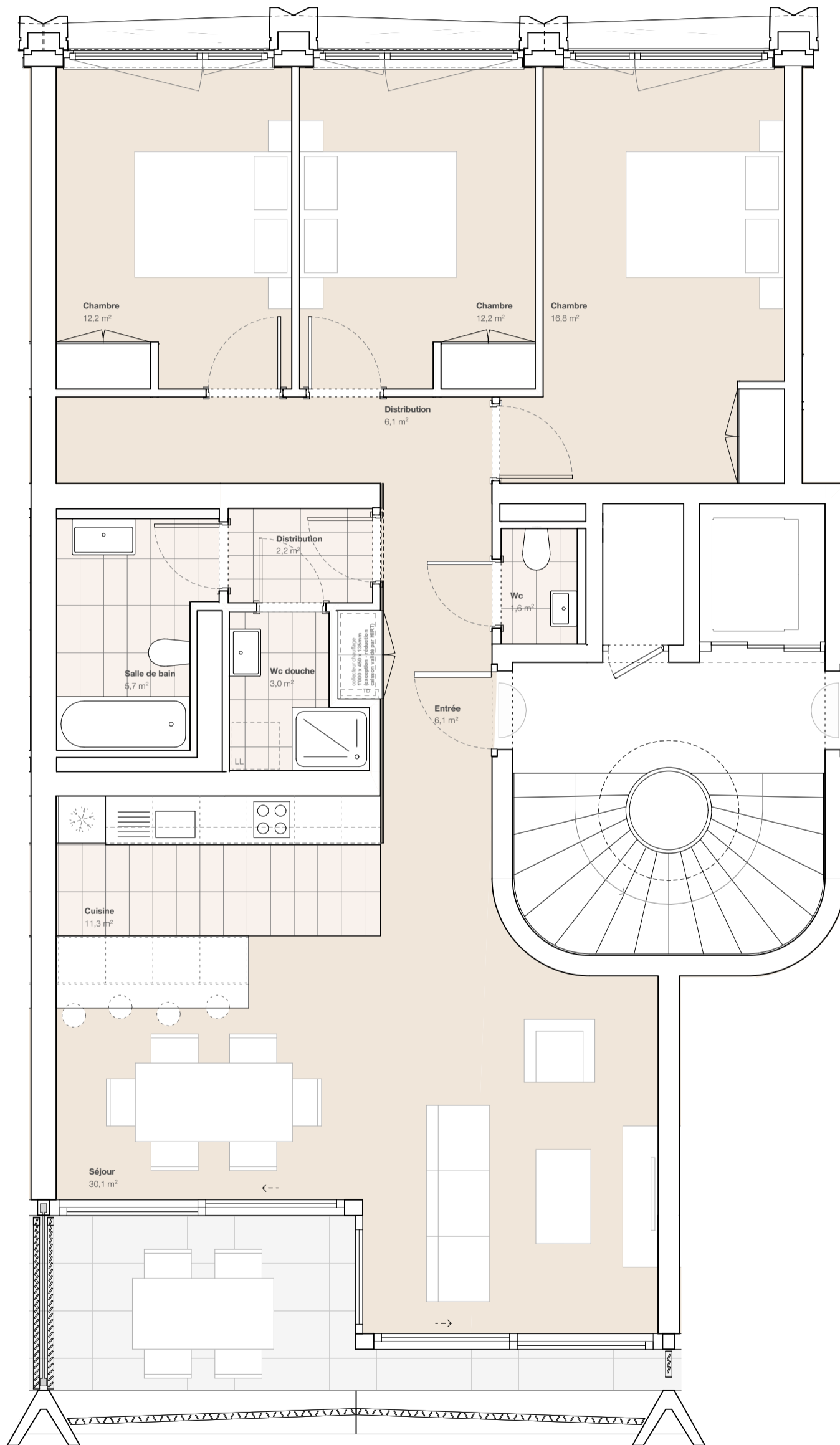
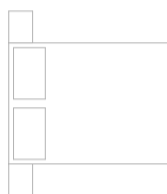


Parquet



Grès - cérame 60 x 60

Proposition ameublement à titre indicatif



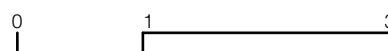
m+aa

Maître d'ouvrage
Coronado SA / Mader investissement SA / Firebird SA

p.a. Targa Immobilier
Rue Vautier 11, 1227 Carouge GE

COMMERCIALISATION
395maa_929-A

Architectes
meier + associés
architectes
Rue du Môle 38bis
1201 Genève



Echelle: graphique

Dessin: ar
Création: 19.06.24

Modification: